

“CARRY IN”

## TITLE I DIRECTOR'S REPORT

MARCH 23, 2017

### **2017 Spring Partner Career Fair**

The semi-annual career fair is scheduled to take place at WITCC on April 27<sup>th</sup> from 10am-3pm. As the date approaches there is increasing interest in the opportunities available for businesses looking to hire skilled and talented graduates as well as those seeking new career opportunities. The core partners are working to get the information out to potential employees through handouts, Facebook and other social media, as well as word of mouth. Businesses who attended the previous events are once again being invited to attend this spring's event. In addition contacts made by the Business Services Team as well as those who are currently on the Employer's Council of Iowa (ECI) list are receiving invitations to attend. If you know of someone interested in attending the 2017 Spring Career Fair please let us know as spots will fill quickly.

### **Business Closures Updates**

According to an article recently shown of FOX News, Bob Knakal, Chairman of New York City Investment Sales at Cushman & Wakefield is predicting 5,000 retail stores will be closing in 2017. The phrase “Retail Ice Age” is also being used to describe the outlook for many of the large national retail chains that are located throughout the region. In an article recently published concerning Sears, it was stated that their future was at best “questionable.”

At the same time some companies continue to flourish and look to expand there are, unfortunately, several others that have either already announced their closing or have plans in the works to do so. Including the following:

K-Mart: Staff met with employees of K-Mart on March 6<sup>th</sup> at the business with about 20 of the current employees. There is interest in retraining and working to upskill based on information received during the meeting. Although there is nothing official, it is likely the store will only remain open for a few more days, perhaps through the end of the month. At that time we are anticipating meeting with more of the affected employees.

Alorica: Although the call center is located in South Dakota the closing of this facility will have an effect on the local region and economy. When the announcement was made indicating they would be closing there were an estimated 260 people still actively employed at the site. The most recent information indicates there are approximately 240 still working at the facility. Initial contact with company officials by South Dakota representatives indicate a large percentage of those who will lose their jobs are Iowa residents. IowaWORKS representatives are being invited to attend Rapid Response meetings to meet with Iowa residents. The details are still being worked out, however, it is likely we will be meeting with the affected employees in early April.

Family Christian Book Store and Vanity have both announced the closing of their Sioux City stores. Although we do not know when they will close we are working to try and set up meetings to provide Rapid Response information to those affected by the closings.

Gordman's announced earlier this month that they had file for bankruptcy protection and plans were being made to liquid all of the company's assets. At this time a WARN notice has not been received indicating for certain if the stores will close and if so, whe

1. Currently serving Adult Basic Education at the following locations:
  - a. WITCC Main Campus
  - b. Goodwill in Sioux City
  - c. IowaWORKS Greater Siouxland
  - d. West High School (includes free childcare)
  - e. Le Mars
  - f. Denison
2. 832 current number of enrolled students in program with 12+ hours or more
3. Total attendance 56,502 hours
4. 288 students have completed current levels
5. 59 HSED completers up to this date
6. 54% ELL Students post-tested in December and March
7. 42% ABE Students post-tested in December and March
8. 3 benchmarks have been achieved in the following areas:
  - a. ABE Beginning Literacy
  - b. ESL Beginning Literacy
  - c. ESL Advanced
9. Recently participated in an Iowa State Extension Activity for Latinos at WITCC
10. Upcoming Festival of Nations activity for WITCC and community
11. Partnership with Cherokee program for HSED starting today
12. Recently attended a training to start an IBEST Program on WITCC Campus
13. Attending a Department of Education Training session next week to prepare to write the RFP
14. ABE Coordinators will attend a National Training Program in April
15. Recently completed staff training at WITCC including completing our Strategic Plan to create a Targeted Instructional Packet to help struggling students achieve their goals including the following:
  - a. Completion of everyday life required forms including police reports
  - b. Map reading
  - c. Graph and Chart reading

**INTEGRATION STATISTICS AT A GLANCE**  
**Program Year 2015**  
**Total Membership/New Members**

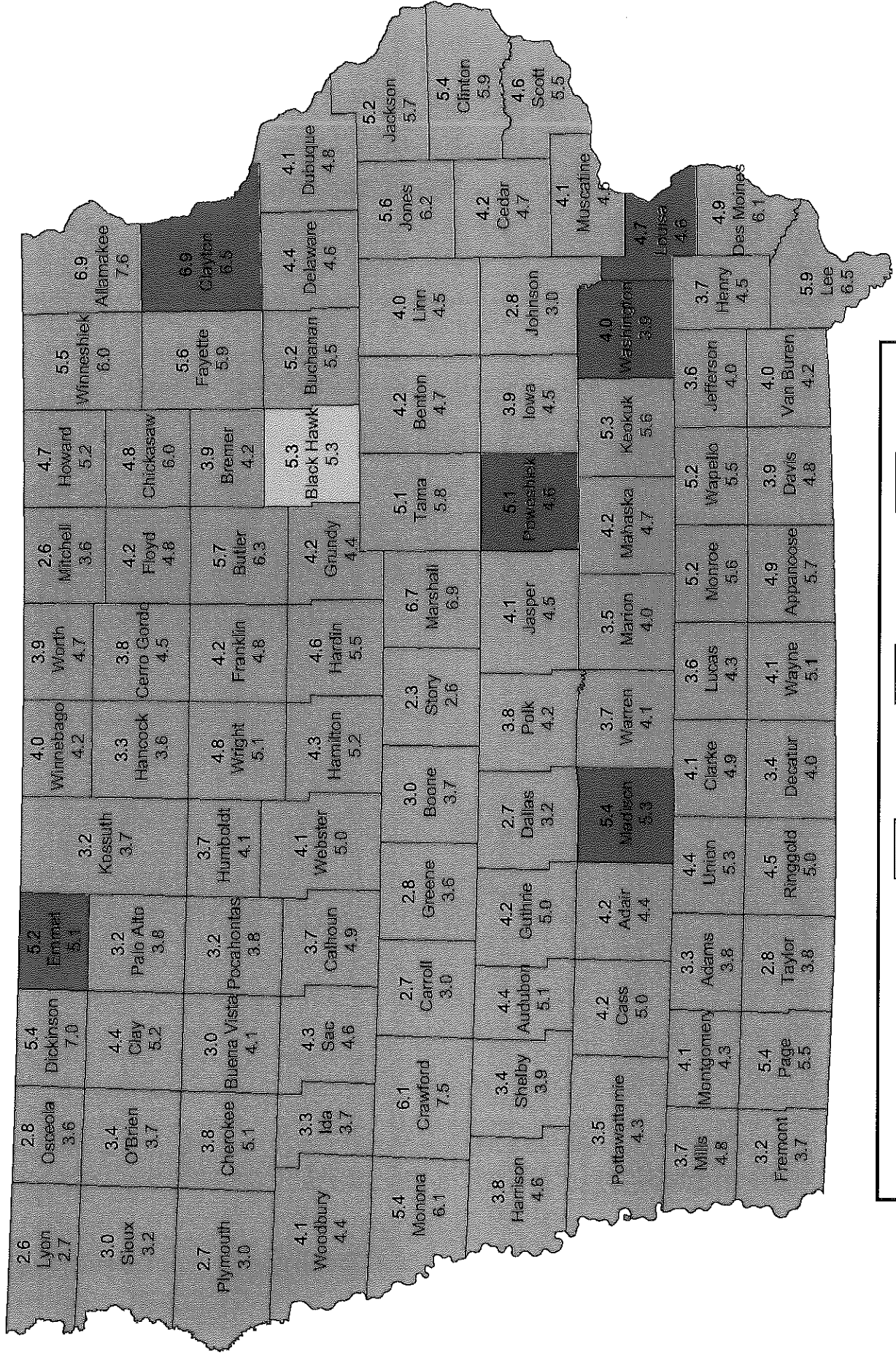


DRAFT/DRAFT!!!!

	Total New Members Jul 2015	Total New Members Aug 2015	Total New Members Sep 2015	Total New Members Oct 2015	Total New Members Nov 2015	Total New Members Dec 2015	Total New Members Jan 2016	Total New Members Feb 2016	Total New Members Mar 2016	Total New Members Apr 2016	Total New Members May 2016	Total New Members Jun 2016	New Member Program Year to Date
1 Dubuque	262	344	291	290	451	569	523	393	424	383	431	390	4751
1 Decorah	136	117	136	85	248	464	160	128	127	80	130	155	1966
2 Mason City	409	308	285	288	439	674	362	281	355	356	260	361	4378
3 & 4 Spencer	182	138	143	174	282	451	301	132	166	130	167	276	2542
5 Fort Dodge	356	245	239	236	321	328	313	199	229	196	274	232	3168
5 Webster City	34	34	23	29	69	69	58	30	32	39	25	35	477
6 Marshalltown	398	582	433	526	676	642	447	422	446	364	375	392	5703
7 Waterloo	927	681	614	578	825	1026	791	578	641	537	703	630	8531
8 Carroll	89	145	104	114	141	174	122	78	131	97	87	76	1358
9 Davenport	905	855	945	970	1168	1382	1157	908	948	811	816	924	11789
10 Cedar Rapids	661	647	727	650	829	1093	840	667	782	703	663	655	8917
11 Des Moines	1706	1565	1651	1487	1865	2225	1937	1500	1663	1495	1329	1657	20080
12 Sioux City	763	752	791	713	1004	1063	944	694	932	683	655	694	9688
13 Council Bluffs	426	412	510	456	500	637	444	388	453	416	657	433	5732
14 Creston	146	128	129	143	174	230	180	125	114	98	60	130	1657
15 Ottumwa	597	683	621	484	725	690	488	479	523	469	588	601	6948
16 Burlington	411	286	329	312	257	458	384	248	229	274	306	280	3774
<b>8408</b>	<b>7922</b>	<b>7971</b>	<b>7971</b>	<b>7535</b>	<b>9974</b>	<b>12175</b>	<b>9451</b>	<b>7250</b>	<b>8195</b>	<b>7131</b>	<b>7526</b>	<b>7921</b>	<b>101459</b>
8408	7922	7971	7535	9974	12175	9451	7250	8195	7131	7526	7921	7921	

# Unemployment Rates for Iowa Counties in January

January 2017 (Rate Above) and January 2016 (Rate Below)



**Change Since Last Year**

- Dark Grey: Increase
- Light Grey: Decrease
- White: No Change



**New Members/One-Stop Customers INTEGRATION STATISTICS AT A GLANCE**  
 Month of: February 2017  
 Total Membership

Location	Reg #	Total New Members	Regional Unemp Claims	Ratio of New Members to Unemp Claims	Gender		Disability		Age								
					# Male of New Members	Male Gender Ratio to Total Members	# Female of New Members	Female Gender Ratio to Total Members	# Disabled of New Members	Overall Disabled Served	% of Young Adults Age 18-23 of New Members	% Adults Age 24-54 of New Members	% 55 and Above of New Members				
Dubuque	1	351	654	56.7%	198	56.4%	151	47.9%	26	7.4%	49	13.7%	238	67.6%	64	18.2%	
Decorah	1	109	173	63.0%	64	58.7%	45	41.3%	15	13.8%	14	2.9%	74	67.9%	21	19.3%	
Mason City	2	336	550	61.1%	175	52.1%	160	47.9%	52	15.5%	36	10.7%	220	65.5%	80	23.8%	
Spencer	3 & 4	135	377	35.8%	74	54.8%	61	45.2%	21	15.6%	21	15.5%	74	54.8%	40	29.8%	
Fort Dodge	5	178	218	81.7%	109	61.2%	68	38.8%	22	12.9%	24	13.5%	116	65.2%	38	21.3%	
Webster City*	5	15	61	24.6%	8	53.3%	7	40.7%	2	13.3%	2	13.3%	3	20.0%	10	66.7%	
Marshalltown	6	405	284	142.8%	248	61.2%	156	38.8%	33	8.1%	67	16.5%	288	71.4%	50	12.3%	
Waterloo	7	559	731	76.5%	294	52.6%	265	47.4%	58	10.4%	64	11.4%	391	69.9%	104	18.6%	
Waterloo*																	
Carroll	8	78	147	53.1%	43	55.1%	35	44.9%	9	11.6%	6	7.7%	58	74.5%	14	17.9%	
Denison*																	
Davenport	9	715	1061	67.4%	400	56.0%	314	44.0%	69	9.7%	87	12.2%	530	74.1%	98	13.7%	
Cedar Rapids	10	649	1643	39.5%	347	53.5%	301	46.5%	80	12.3%	73	11.3%	449	69.2%	127	19.5%	
Des Moines	11	1480	2327	63.6%	824	55.7%	654	44.3%	186	12.6%	140	9.5%	1121	75.7%	219	14.8%	
Sioux City	12	605	470	128.7%	341	56.4%	264	43.6%	53	8.8%	84	13.9%	431	71.2%	90	14.9%	
Council Bluffs	13	339	354	95.8%	185	54.6%	154	45.4%	40	11.8%	43	12.7%	243	71.7%	53	15.6%	
Creston	14	89	153	58.2%	45	50.6%	44	49.4%	9	10.1%	9	10.1%	63	70.8%	17	19.1%	
Ottumwa	15	380	321	118.4%	222	58.4%	157	41.6%	42	11.1%	59	15.5%	271	71.3%	50	13.2%	
Burlington	16	300	731	41.0%	183	61.0%	117	39.0%	26	8.7%	43	14.3%	199	66.3%	58	19.2%	
<b>Total</b>		<b>6723</b>	<b>10255</b>	<b>65.6%</b>	<b>3760</b>	<b>55.9%</b>	<b>2963</b>	<b>44.1%</b>	<b>743</b>	<b>11.0%</b>	<b>821</b>	<b>12.2%</b>	<b>4769</b>	<b>70.9%</b>	<b>1133</b>	<b>16.8%</b>	
																	1133 ←====Check

\* = NEG/DWG Nat'l Emerg Grant transition center only.  
 (x) = closed office

Month of October New Member Stats was adjusted/updated 12/7/2016 based upon receipt of a corrected report. UI and Active Members contained within this



Location	Reg #	Total New Members	Education					Veteran			
			% of New Memb Need High Sch Equiv.	% of New Memb Attain High Sch Dipl or Equiv.	Some College Ed	College Degree	Educ. Beyond College & Aby <sup>17</sup>	Veteran	Veteran Rptd Disabled		
Dubuque	1	1	29	198	85	28	11	19	5		
Decorah	1	109	10	72	16	10	1	10	2		
Mason City	2	336	40	191	80	20	5	25	3		
Spencer	3 & 4	135	15	80	23	12	5	15	4		
Fort Dodge	5	178	23	99	41	14	1	15	1		
Webster City*	5	15	0	9	5	0	1	2	1		
Marshalltown	6	405	129	201	62	10	3	23	3		
Waterloo	7	559	71	331	103	44	10	28	3		
Waterloo*											
Carroll	8	78	6	47	20	5	0	6	2		
Dentison*											
Davenport	9	715	74	424	156	50	11	47	12		
Cedar Rapids	10	649	70	344	146	68	21	45	3		
Des Moines	11	1480	249	747	312	137	35	91	22		
Sioux City	12	605	127	312	136	22	8	40	9		
Council Bluffs	13	339	68	194	57	17	3	23	8		
Creston	14	89	10	50	26	3	0	7	2		
Ottumwa	15	380	73	226	57	18	6	14	1		
Burlington	16	300	35	194	57	13	1	17	1		
<b>Total</b>		<b>6723</b>	<b>1029</b>	<b>3719</b>	<b>1382</b>	<b>471</b>	<b>122</b>	<b>427</b>	<b>82</b>		
											82 ← Check

\* = NEGINDWG Nat'l Energy Grant transition c  
(x) = closed office

Month of report remained as it was published.



Ethnicity/Race

Location	Reg #	Total New Members	Hispanic	Race- AIAN*	Race- Asian	Race- Black/ African Amer	Race- HNP1**	Race- Native	Race- White
Dubuque	1	351	16	3	2	55	5	5	261
Decorah	1	109	9	1	1	1	0	0	99
Mason City	2	336	33	5	8	26	0	0	257
Spencer	3 & 4	135	18	2	1	2	0	0	117
Fort Dodge	5	178	16	2	0	18	0	0	140
Webster City*	5	15	0	0	0	0	0	0	15
Marshalltown	6	405	123	15	39	42	1	1	216
Waterloo	7	559	55	10	2	163	2	2	363
Waterloo*									
Carroll	8	78	9	1	0	5	1	1	63
Denison*									
Davenport	9	715	87	10	4	158	2	2	458
Cedar Rapids	10	649	69	6	11	126	1	1	436
Des Moines	11	1480	186	22	59	366	9	9	877
Sioux City	12	605	153	39	13	43	4	4	351
Council Bluffs	13	339	49	9	5	24	5	5	236
Creston	14	89	13	1	0	2	0	0	69
Ottumwa	15	380	71	9	1	35	12	12	259
Burlington	16	300	31	9	5	52	2	2	202
<b>Total</b>		<b>6723</b>	<b>938</b>	<b>144</b>	<b>151</b>	<b>1118</b>	<b>44</b>	<b>44</b>	<b>4419</b>

\* = NEGINDWG Nat'l Emerg Grant transition c  
 (x) = closed office  
 \*\*Hawaiian Native/Pacific Islander

Month of

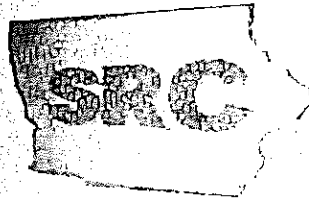


Location	Reg #	Total New Members	Referrals to/CoEnrollments						MSFW		Initial ServPlan # New Members with Initial Services Plan	ACTIVE Total # of Members Receiving Services (Active)
			WIA Adult Intensive	WIA Adult Intensive	WIA DW Intensive	WIA Displaced Homemaker	PJ	MSFW Migrant Workers	MSFW Seasonal Farm Worker			
Dubuque	1	351	177	60	22	6	1	1	3	1537		
Decorah	1	109	56	22	1	0	0	2	646			
Mason City	2	336	189	73	4	1	1	3	1611			
Spencer	3 & 4	135	74	34	0	0	0	0	906			
Fort Dodge	5	178	90	28	1	1	1	3	1019			
Webster City*	5	15	13	8	0	0	1	1	144			
Marshalltown	6	405	171	28	5	2	7	7	1846			
Waterloo	7	559	306	69	10	3	0	0	3618			
Waterloo*												
Carroll	8	78	41	18	0	1	4	4	395			
Denison*												
Davenport	9	715	335	85	12	1	4	4	3392			
Cedar Rapids	10	649	342	133	3	1	9	9	3169			
Des Moines	11	1480	749	185	31	7	8	8	5792			
Sioux City	12	605	269	73	4	2	8	8	2586			
Council Bluffs	13	339	120	35	2	3	1	1	1494			
Creston	14	89	47	18	0	0	0	0	601			
Ottumwa	15	380	128	18	4	0	8	8	1821			
Burlington	16	300	133	36	3	0	1	1	1452			
<b>Total</b>		<b>6723</b>	<b>3240</b>	<b>913</b>	<b>86</b>	<b>23</b>	<b>62</b>	<b>62</b>	<b>32029</b>			

\* = NEGINDWG Nat'l Emerg Grant transition c  
6723  
(x) = closed office

Month of





# STATE REHABILITATION COUNCIL

2016-2017

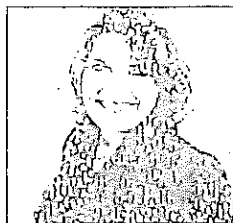
## SRC CHAIR



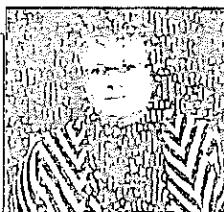
ROSIE THIERER  
Polk County  
Disability Advocacy Group

Appointed by the governor,  
we are the advisory group for the  
Department of Education's  
Iowa Vocational Rehabilitation Services on  
the quality and effectiveness of  
programs and services.

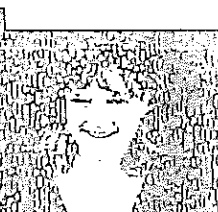
## SRC VICE-CHAIR



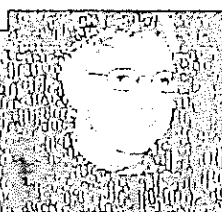
JILL CROSSER  
Story County



SHERRI CLARK  
Montgomery County  
Community Rehab Program



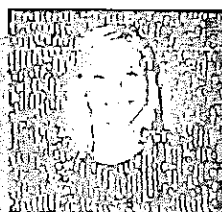
NICOLE CLEVELAND  
Woodbury County  
Disability Advocacy



RANDY DAVIS  
Mahaska County  
Disability Advocacy



KIM DREW  
Polk County  
Iowa Dept. of Education



PAIGE EASTIN  
Polk County  
Client Assistance Program

**"Disability** is a natural part of the human experience and in no way diminishes the right of individuals to live independently; enjoy self-determination; make choices; contribute to society; pursue meaningful careers; and enjoy full inclusion and integration in the economic, political, social, cultural, and educational mainstream of American society."



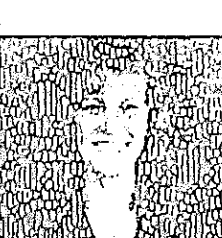
ALEX WATTERS  
Woodbury County  
Business, Labor & Industry



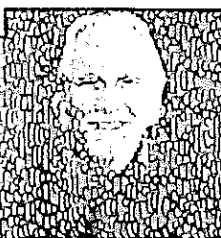
SCOTT TURCZYNSKI  
Polk County  
Business, Labor & Industry



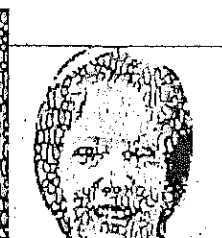
JAMES SMITH  
Johnson County  
IVRS Counselor



LORI MOORE  
Polk County  
Parent, Training &  
Information Center



GARY MCDERMOTT  
Clinton County  
Statewide Independent  
Living Center



PAM FITZSIMMONS  
Marion County  
Business, Labor & Industry



# IOWA VOCATIONAL REHABILITATION

FFY

For every state dollar appropriated to Iowa Vocational Rehabilitation Services,  
our agency receives \$3.69 federal dollars.

Our 2017 appropriation is \$5,911,200 ➡ this matches \$21,840,912 federal dollars.

## The investment pays off!

#1

Iowans with disabilities served by IVRS in FFY16 have an aggregated estimated income of \$37.1 million annually.

#4

A Total of 2,225 VR Iowans with disabilities obtained employment in the 2016 federal fiscal year.

#2

252 VR job candidates were receiving public support for living expenses (SSI, SSDI, TANF, General Assistance). Those Iowans are now employed and supporting themselves — a savings of \$924,057.96 annually for the state!

#5

Approximately 96 percent of successful VR job candidates remain in Iowa — working, paying taxes, and contributing to their communities.

#3

Iowa Vocational Rehabilitation Services has a positive impact on linking our youth with disabilities to career pathways!

Twenty-five percent of our referrals come from Iowa school districts and 968 students were successfully employed, working 34 hours/week with average earnings of \$11.77 / hour.

#6

\$7.14 million was spent on post-secondary tuition assistance, facilitating educational and occupational skills attainment.

A proud partner of the

**AmericanJobCenter**  
network

*Our State Dollars produce a positive return on investment - putting*

Disability Employment Rate Ranked by State, 2015

State	Number of Workers with Disabilities	Number of Workers without Disabilities	Disability Employment Rate (%)
WY	37,643	21,508	57.1
SD	51,131	26,419	51.7
ND	38,112	18,582	48.8
NE	101,734	49,485	48.6
MN	297,630	141,257	47.5
<b>6 IA</b>	<b>180,139</b>	<b>83,391</b>	<b>46.3</b>
UT	155,508	71,185	45.8
KS	184,791	79,132	42.8
AK	47,039	19,951	42.4
WI	351,787	144,815	41.2
NV	203,190	83,559	41.1
VT	47,744	19,575	41.0
CO	286,231	116,812	40.8
MT	71,852	28,960	40.3
ID	63,826	25,641	40.2
MD	328,697	131,573	40.0
NH	89,630	35,390	39.5
TX	1,624,438	626,445	38.6
IL	117,837	45,124	38.3
NJ	428,810	162,728	37.9
OR	320,586	121,155	37.8
VA	479,430	179,153	37.4
WA	483,334	177,921	36.8
RI	74,090	26,506	35.8
PA	885,256	316,361	35.7
CT	190,691	67,517	35.4
MO	463,157	163,574	35.3
OH	847,932	298,233	35.2
MA	393,251	137,985	35.1
IN	667,643	233,233	34.9
OK	320,480	111,672	34.8
AZ	418,062	143,168	34.2
DE	54,900	18,593	33.9
CA	2,017,962	682,393	33.8
LA	372,108	122,832	33.0
NY	1,098,072	362,397	33.0
NC	728,535	234,674	32.2
HI	657,996	25,641	31.6
FL	45,260	14,214	31.4
GA	1,186,644	369,205	31.1
MI	759,606	234,356	30.9
NM	156,118	48,139	30.8
AR	264,777	81,376	30.7
TN	550,696	167,179	30.4
ME	115,013	34,052	29.6
SC	370,744	106,350	28.7
AL	435,585	121,330	27.9
MS	259,265	71,339	27.5
KY	421,948	115,577	27.4
WV	187,077	47,517	25.4

# IOWA

**ranks in the TOP 10 states  
for workers with disabilities!**

## People with Disabilities Twice as Likely to be Employed in Some States

*Research compiled by the Rehabilitation Research and Training Center on Disability Statistics and Demographics shows a large variance in state employment outcomes.*

Nationally, only 34.9% of U.S. civilians with disabilities ages 18-64 living in the community had a job in 2015, compared to 76% for people without disabilities.

**We still have work to do!**

Source: RespectAbility Press Release, February 24, 2017  
<http://respectabilityusa.com/2017/02/people-with-disabilities-twice-as-likely-to-be-employed-in-some-states-as-others/>

Employment Gap Ranked by State, 2015

# The Employment Gap

Calculated by comparing the difference in employment rates between people with and without disabilities reveals how far behind people with disabilities are falling in a given state's economy.



The smaller the gap, the more inclusive a given state's economy is, which translates into more opportunities for people to earn an income and become independent.

The bigger the gap, the more catastrophic the employment outcomes experienced by people with disabilities, compared to their non-disabled peers.



## IOWA

ranks in the TOP 10 states, closing the employment gap for workers with disabilities!

State Rank	State	Gap Employ. Rate	Non-Dis. Employ. Rate	Gap % Pts
5	ME	29.6	79.7	50.1
6	KY	27.4	74.8	47.4
7	SC	28.7	74.3	45.6
8	TN	30.4	76	45.6
9	MI	30.9	75.4	44.5
10	MA	35.1	79.5	44.4
11	WV	25.4	69.7	44.3
12	AL	27.9	71.8	43.9
13	MO	35.3	78.8	43.5
14	NH	39.5	82.9	43.4
15	CT	35.4	78.7	43.3
16	DE	33.9	77.1	43.2
17	AR	30.7	73.7	43
18	FL	31.1	74.1	43
19	NC	32.2	75.2	43
20	MS	27.5	70.1	42.6
21	GA	31.6	74.1	42.5
22	OH	35.2	77.7	42.5
23	IN	35.6	77.9	42.3
24	RI	35.8	78.1	42.3
25	NY	33	74.9	41.9
26	IL	34.9	76.7	41.8
27	PA	35.7	77.3	41.6
28	OK	34.8	76.1	41.3
29	NM	30.8	72.1	41.3
30	WI	41.2	82.3	41.1
31	VA	37.4	78.1	40.7
32	LA	33	73	40
33	VT	41	81	40
34	WA	36.8	76.4	39.6
35	CA	33.8	73.1	39.3
36	MD	40	79.2	39.2
37	AZ	34.2	73.1	38.9
38	NJ	37.9	76.5	38.6
39	CO	40.8	79.3	38.5
40	OR	37.8	76.2	38.4
41	ID	38.3	76.6	38.3
42	HI	40.2	77.8	37.6
43	KS	42.8	79.9	37.1
44	MT	40.3	77.4	37.1
45	TX	38.6	75.5	36.9
46	MN	47.5	83.8	36.3
8	<b>IA</b>	<b>46.3</b>	<b>82.4</b>	<b>36.1</b>
48	NE	48.6	83.4	34.8
49	ND	48.8	83.6	34.8
50	AK	42.4	76.7	34.3
51	NV	41.1	74.8	33.7
52	UT	45.8	78.3	32.5
53	SD	51.7	82.6	30.9
54	WY	57.1	79.1	22.0



Iowa Vocational Rehabilitation Services

Finding solutions. Generating success.

# SERVICES — INVESTING IN IOWANS

16

## Our Services

- Medical and psychological assessment
- Technological assessment
- Vocational assessment
- Counseling and guidance
- Transition services for students
- Physical and/or mental restoration services that may include therapy, wheelchairs, hearing aids, etc.
- Special adaptive equipment or devices
- Academic/vocational on-the-job training
- Occupational tools, equipment or licenses
- Planning for self-employment
- Personal assistance
- Supported employment
- Job coaching
- Job placement
- Follow-up after job placement to assist with work and employer satisfaction

## Collaborative Employment Partnerships

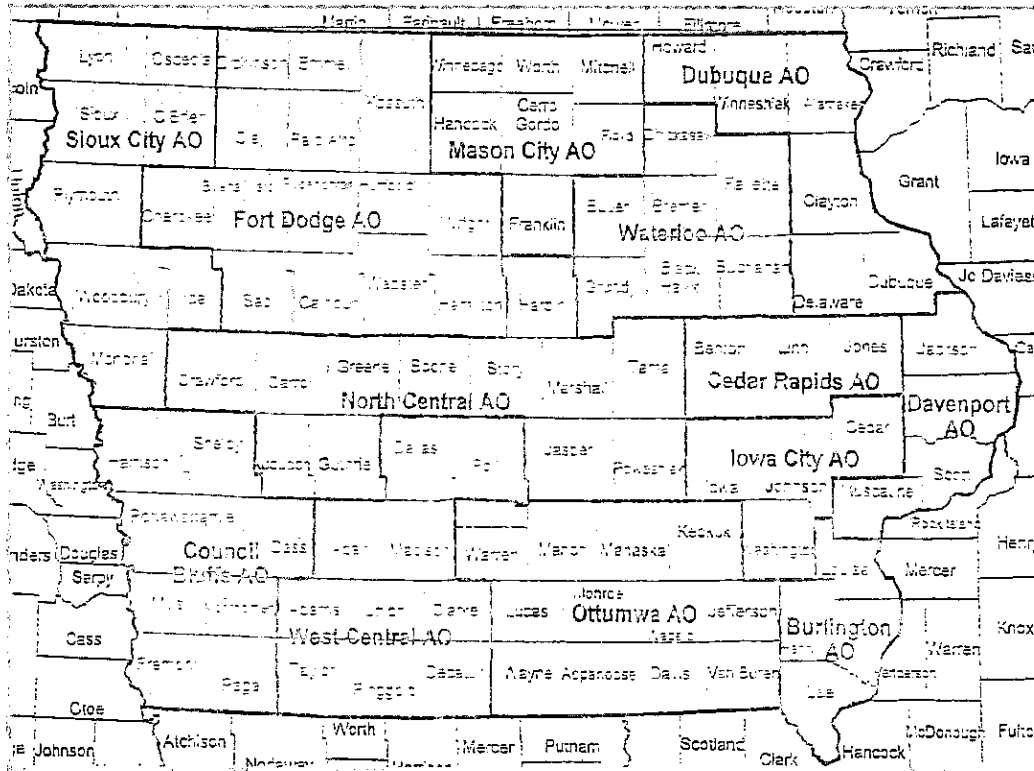
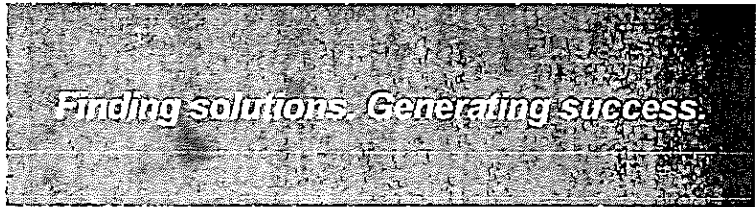
Intermediary Networks	→	Iowa Department of Education—Community Colleges
Transition Alliance Program	→	Iowa Department of Education—Secondary Schools
Older Worker Employment Program	→	Iowa Department of Aging, Area Agencies on Aging
Supported Employment Services	→	Iowa Department of Human Services—IA Medicaid Enterprise
Iowa School for the Deaf	→	Sharing resources to increase federal dollars received for Iowa
Iowa Self-Employment Program	→	Fifty-eight new businesses started in FFY16
Iowa Employment First	→	Private and public effort with the belief that all Iowans can work with the right services and support
Iowa Unified State Plan	→	Iowa Workforce Development and Partners



*g Iowans to work is a good thing! Building a Future Ready Iowa.*



Iowa  
Vocational  
Rehabilitation  
Services



**Burlington Area Office**  
Suzanne Frice, Supervisor  
1000 North Roosevelt, Suite #7  
Burlington, Iowa 52601  
319.753.2231

**Cedar Rapids Area Office**  
Holly Mateer, Supervisor  
4444 1st Avenue NE, Suite 436  
Cedar Rapids, Iowa 52402  
319.294.9308 (Voice/TTY)

**Council Bluffs Area Office**  
Sally Prange, Supervisor  
300 W. Broadway, Suite 33  
Council Bluffs, Iowa 51503-9030  
712.328.3821

**Davenport Area Office**  
Chad Pratz, Supervisor  
3827 W. Locust Street  
Davenport, Iowa 52804  
563.386.1200

**Dubuque Area Office**  
Jeanne Helling, Supervisor  
2600 Dodge Street, Suite NW2  
Dubuque, Iowa 52003  
563.588.4697 (Voice/TTY)

**Fort Dodge Area Office**  
Lori Kolbeck, Supervisor  
Two Triton Circle  
Fort Dodge, Iowa 50501  
515.573.8175 (Voice/TTY)

**Iowa City Area Office**  
Monica Brockway, Supervisor  
1700 South 1st Avenue, Suite 11A  
Iowa City, Iowa 52240  
319.354.4766 (Voice/TTY)

**Mason City Area Office**  
Steve Faulkner, Supervisor  
600 South Pierce Avenue  
Mason City, Iowa 50401-4836  
641.422.1551 (Voice/TTY)

**North Central Area Office**  
Eric Evans, Supervisor  
819 Wheeler Street, Suite 6  
Ames, Iowa 50010  
515.233.5753 (Voice/TTY)

**Ottumwa Area Office**  
Kelli Hugo, Supervisor  
15260 Truman Street, Suite 4  
Ottumwa, Iowa 52501-1473  
641.682.7569 (Voice/TTY)

**Sioux City Area Office**  
Adam Dahlke, Supervisor  
2508 East 4th Street  
Sioux City, Iowa 51101-2298  
712.255.8871

**Waterloo Area Office**  
Mike Howell, Supervisor  
3420 University Ave., Suite D  
Waterloo, Iowa 50701-2008  
319.234.0319 (Voice/TTY)

**We** provide expert, individualized services to Iowans with disabilities to achieve their independence through successful employment and economic support.

**West Central/Polk Area Office**  
Leslie McCarthy, Supervisor  
510 East 12th Street  
Des Moines, Iowa 50319  
515.281.4211 (Voice/TTY)  
WATS 800.532.1486 (Voice/TTY)

